

GREAT FOREST FIRES OF THE 21st CENTURY. EUROPEAN COOPERATION TO PREVENT THEM.

OFIDIA 2 Operational Fire Danger prevention platform 2

Wildfire monitoring and prevention: science, innovation and cross-border cooperation towards informed decisions for firefighting

European Forest Week



Food and Agriculture Organization
of the United Nations

Prof. Giovanni Aloisio - CMCC Foundation
Prof. Stergios Anastasiadis – University of Ioannina

Project main facts

European project funded by the Cooperation Programme Interreg V-A Greece-Italy 2014-2020.

The project is co-funded by the EU, European Regional Development Funds (E.R.D.F.) and by National Funds of Greece and Italy

Start Date: 30/03/2018

End Date: 29/03/2020 extended until May 2021

Total Budget: Euro 1.854.000

Priority Axis 2: Integrated Environmental Management

Thematic Objective 6: preserving and protecting the environment and promoting resource efficiency

Specific Objective 2.2: Improvement of joint management and governance plans for biodiversity of coastal and rural ecosystems, paying attention to the natural resources and protected areas, and development of environmental protection measures

Beneficiary Partners:

- CMCC Foundation (Project Coordinator)
- Apulia Region – Civil Protection Section
- University of Ioannina
- Decentralized Administration of Epirus-Western Macedonia, Forest Directorate (DAEWM)

Associated Partners:

- Municipality of Lecce
- ARIF (Regional Agency for Irrigation and Forest Activities)

Achievements

Big Data Infrastructure

- Decision Support System for wildfire monitoring and prevention
- Weather parameters, fire behavior and fire danger indices
- High Performance Computing and data management facilities
- High resolution weather modelling and fire danger forecasting

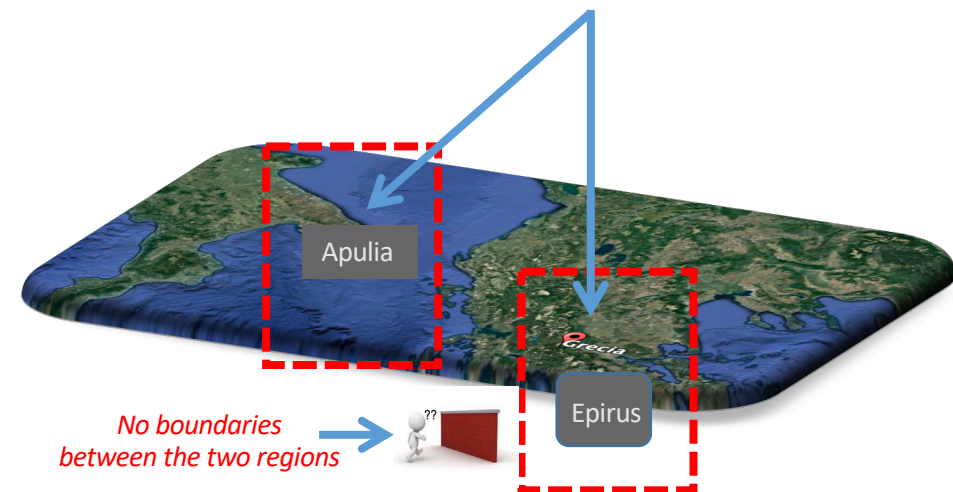
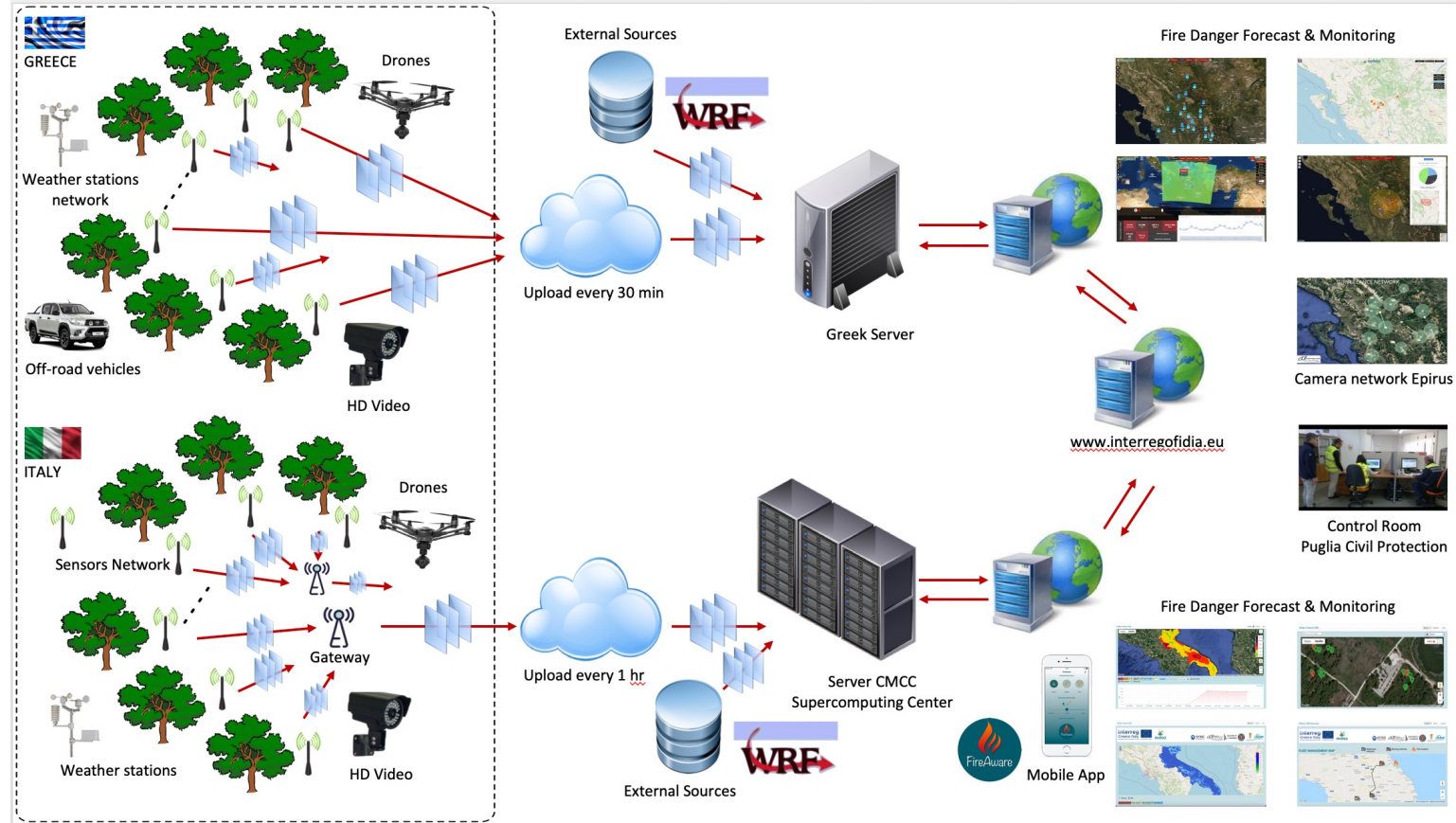
Forest Fires Monitoring & Patrolling

- Weather stations and wireless sensors networks
- HD video cameras, drones and off-road vehicles

Wildfire Control Room at Puglia Civil Protection for fire hazard forecasting and monitoring

FireAware crowdsensing mobile **App** to send an alert notification to the Civil Protection in case of a potential fire hazard, including images and the distance from fire

Cross-border Education and **Lifelong Learning** through awareness-raising campaigns on fire danger prevention and biodiversity protection



OFIDIA2 – System Architecture

Sensors network for real-time monitoring

Puglia, Italy

120 Wireless sensors
Drones
2 Weather stations
5 HD video cameras

Epirus, Greece

12 Video cameras
1 Thermal camera
6 Weather stations
2 Drones
2 Off-road vehicles

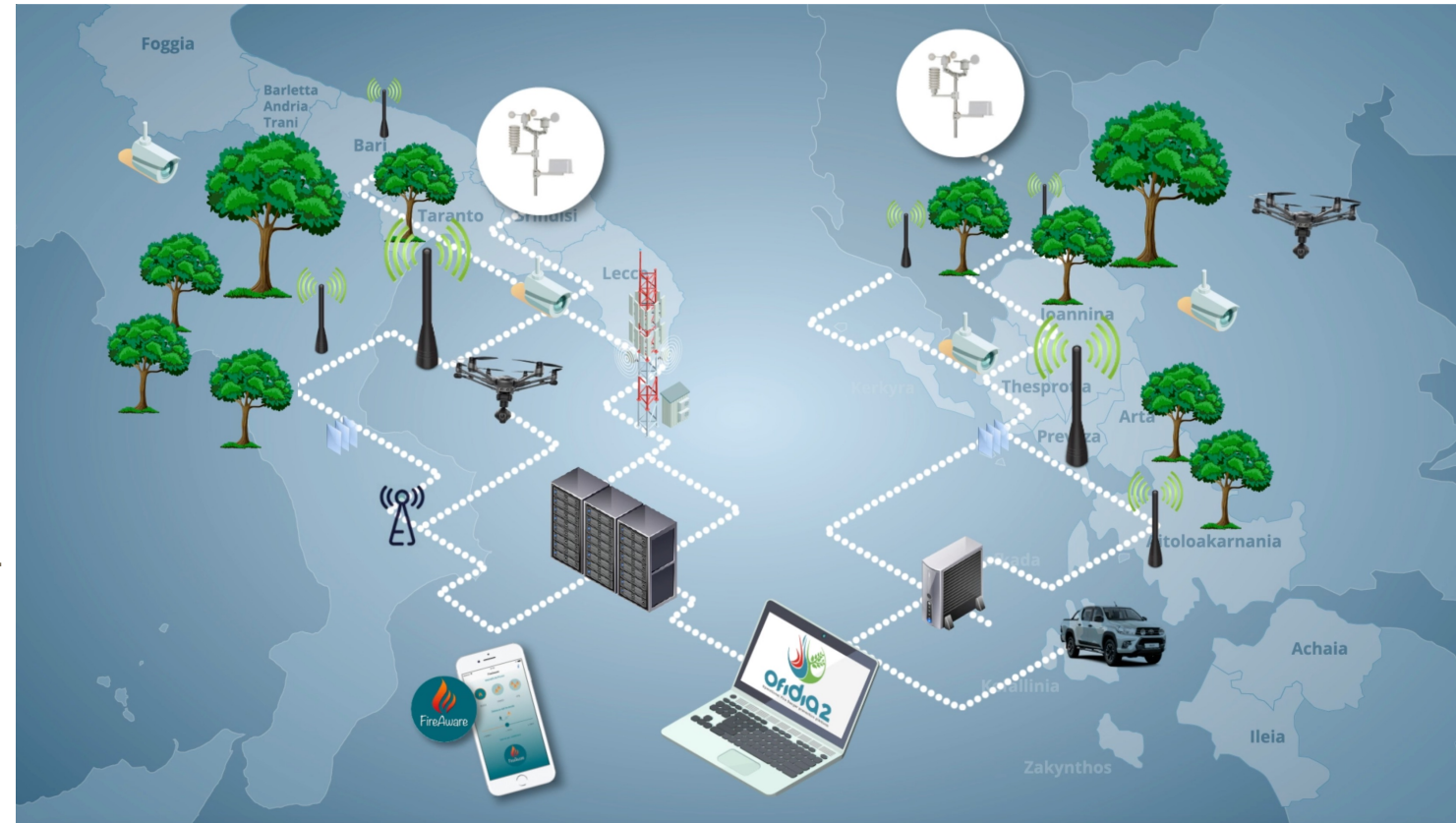
Computing infrastructure

HPC Data Center
Servers and workstation
Desktop & workstations
Tablets + Video walls

@CMCC
@Ioannina Univ.
Greece & Italy
Greece & Italy

Operational Services

Monitoring dashboards	Greece & Italy
Weather forecast - WRF model	Greece & Italy
Decision Support Systems & Viz	Greece & Italy



Wireless Sensors

Pre-alarm sensors

Water transport inside the plant

Log moisture measurement

Growth of the tree diameter

Foliage Health (light transmission in 12 spectral bands)

Leaf temperature measurement

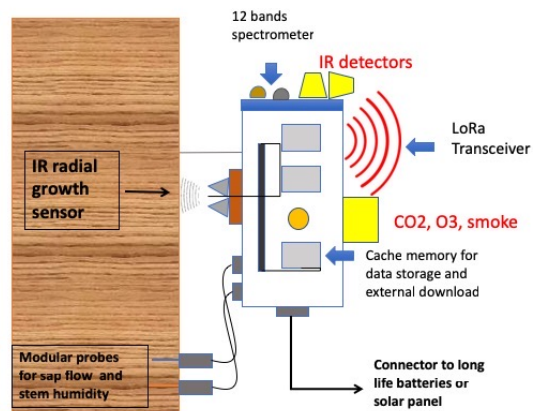
Alarm sensors

Gas concentration measurement (CO₂, O₃, PM 2.5-10)

Flame detection

Tree stability with gyroscopic sensor

The TreeTalker®Fire



Wireless sensors specifically developed and customized for the project



Weather Stations

Air Temperature

Relative air humidity

Total precipitation

Solar radiation

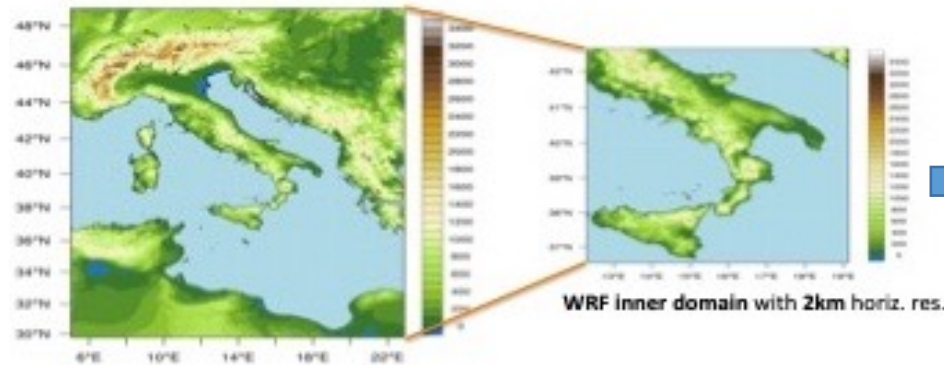
Wind speed and direction



Decision Support System for wildfire monitoring and prevention (Puglia)

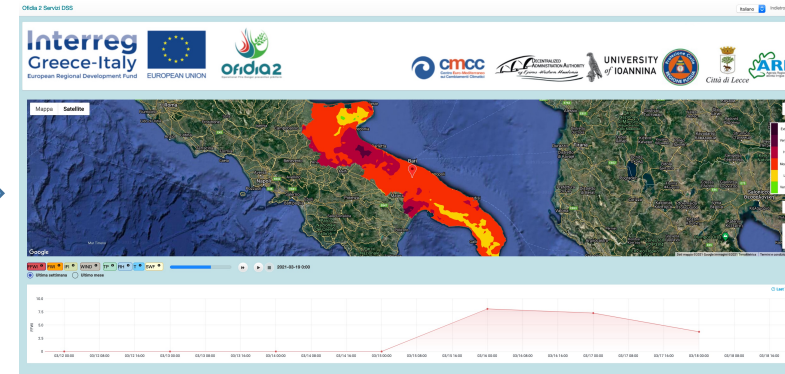
High resolution weather modelling

Weather parameters



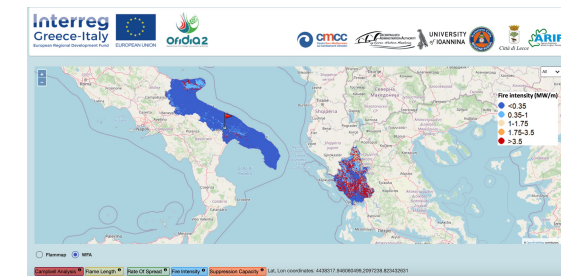
Fire danger forecasting

Fire danger indices & risk maps



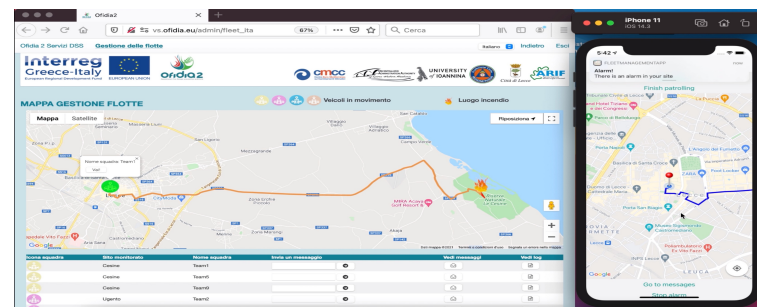
Fire-behavior projection models

models



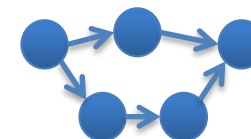
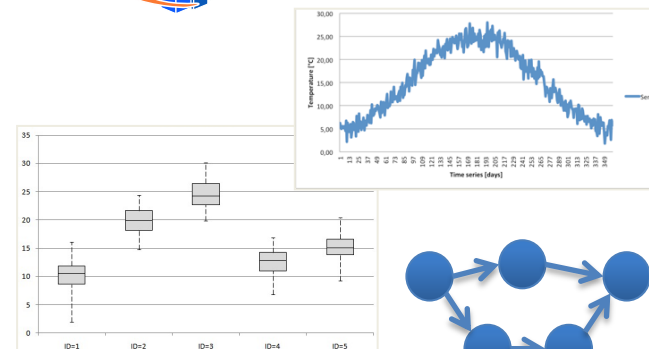
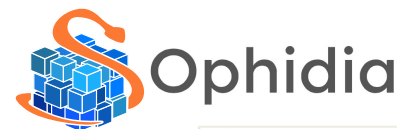
Fleet-management application

for the management of Civil Protection volunteers



High Performance Computing

Data management facilities



ZEUS
1.2 PFlops

348 Dual CPU nodes
12.528 cores
3 Ghz

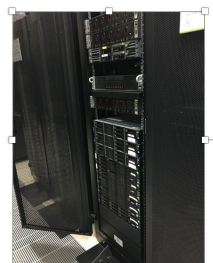


Ophidia Cluster
8 Dual CPU nodes
160 cores
2.2 Ghz



ATHENA
160 TFlops

482 Dual CPU nodes
7712 cores
2.6 Ghz



Decision Support System for wildfire monitoring and prevention (Epirus)

Forecast with a Click
anywhere on the map



Fire Incidents
on circled region



Weather History with a Click
from weather stations



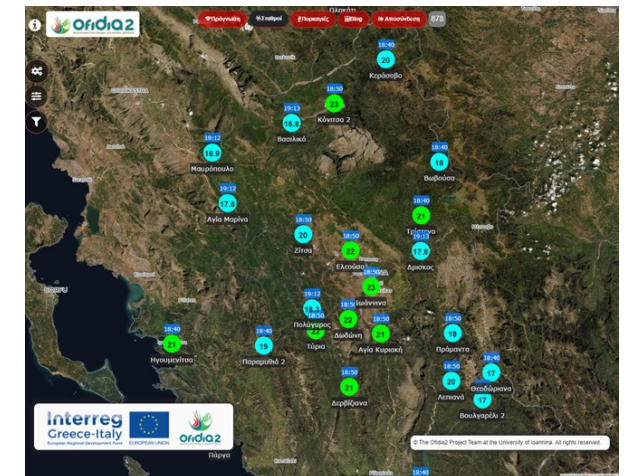
Forecast History



Τοποθεσία	Συντεταγμένες	Ημερομηνία και Ώρα Έναρξης - Λήξης
Περιφερειακή Ενότητα Λευκάδας	Ευρωπαϊκό Κέντρο 29.810000000000000	Παρατηρητήριο Έναρξης 03/26/2011
Δήμος Αρταίων	Ευρωπαϊκό Κέντρο 29.810000000000000	Ώρα Έναρξης 07:25 PM
Διαμέριση Λευκάδας	Παρατηρητήριο Λήξης 03/26/2011	Ώρα Λήξης 07:25 PM

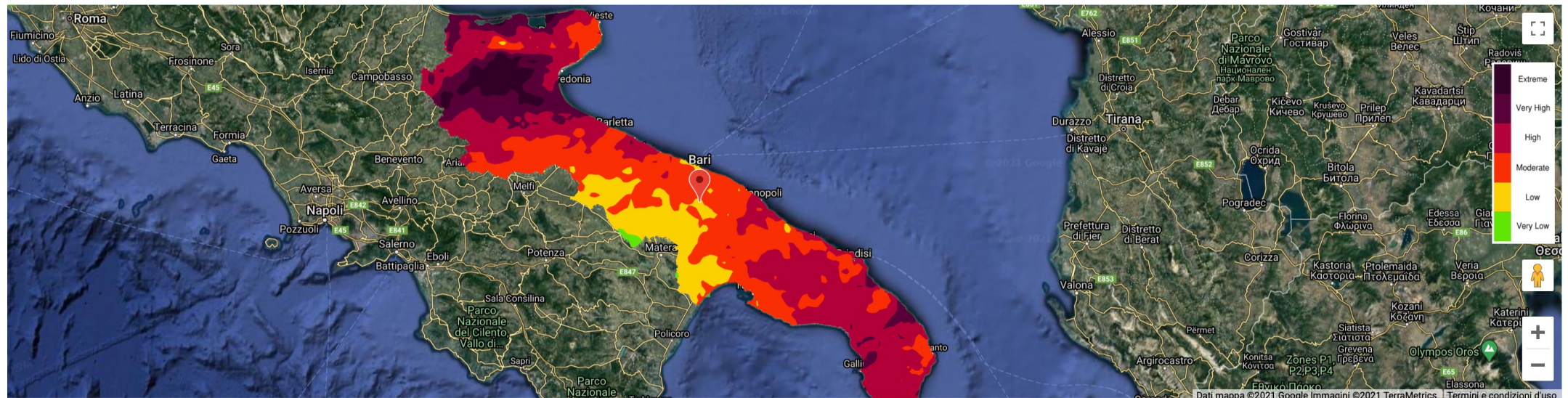
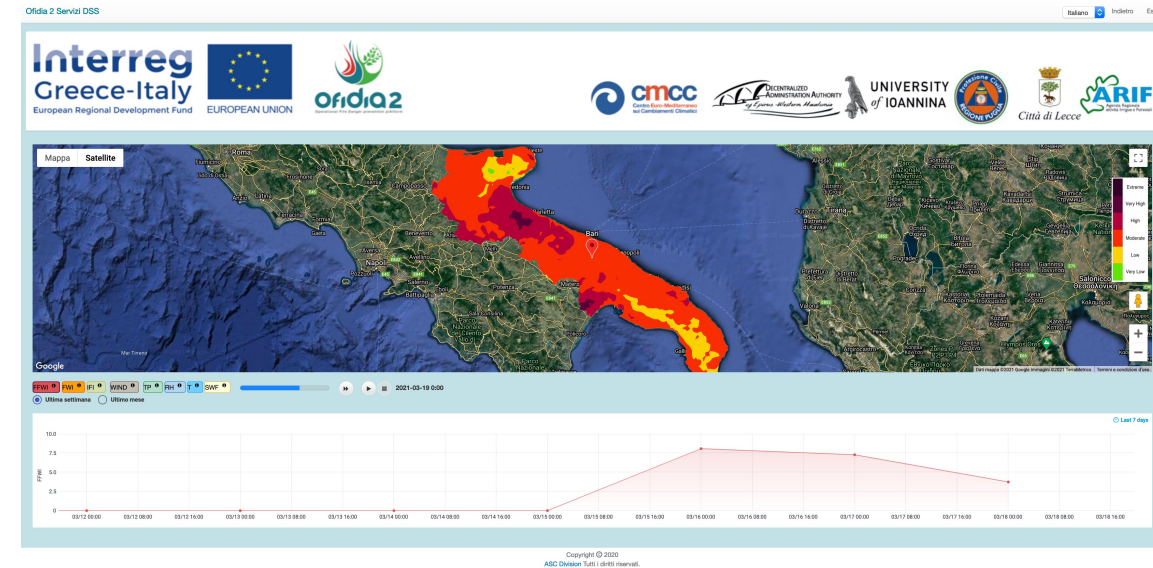
Ανάλυση Καμμένης Έκτασης			
Δήμος	Δήμος	Υπολογισμός Καμμένης Έκτασης	Συνολική Καμμένη Έκταση
Δήμος Έκτασης	Καμμένη Έκταση	Ευρωπαϊκό Κέντρο	Συνολική Έκταση
10.0			

Εμπλεκόμενες Δυνάμεις
Αριθμός Περιφερειακών Οργάνων
Αριθμός Περιφερειακών
Αριθμός Τοπικών Περιφερειακών Οργάνων
Αριθμός Αρτοποιών
Αριθμός Επισκευαστών
Άλλα Παρατηρήσεις



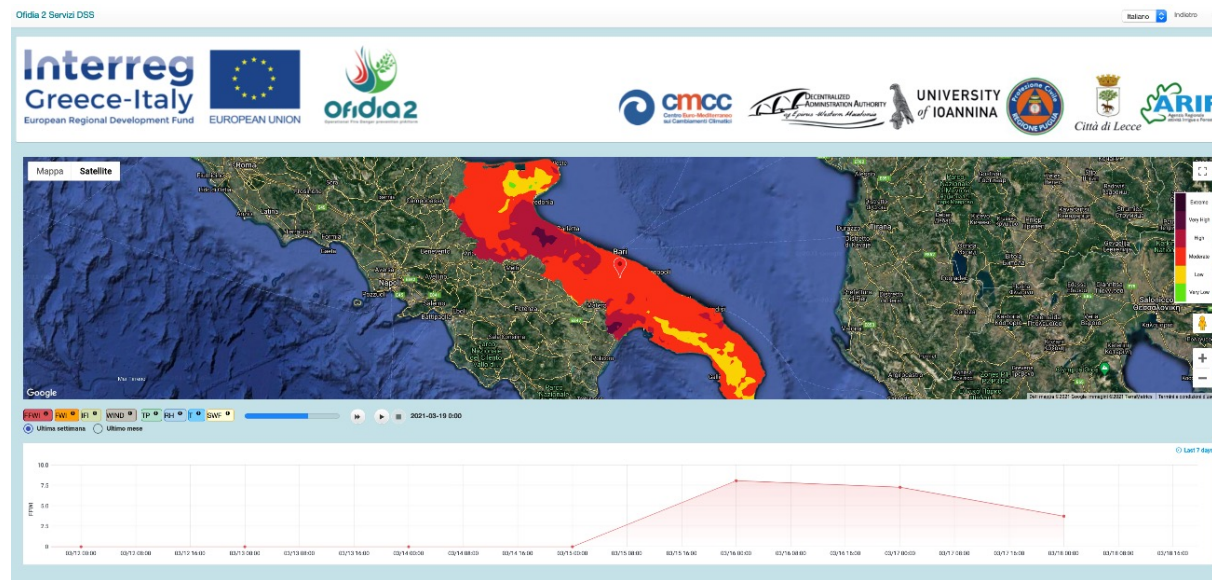
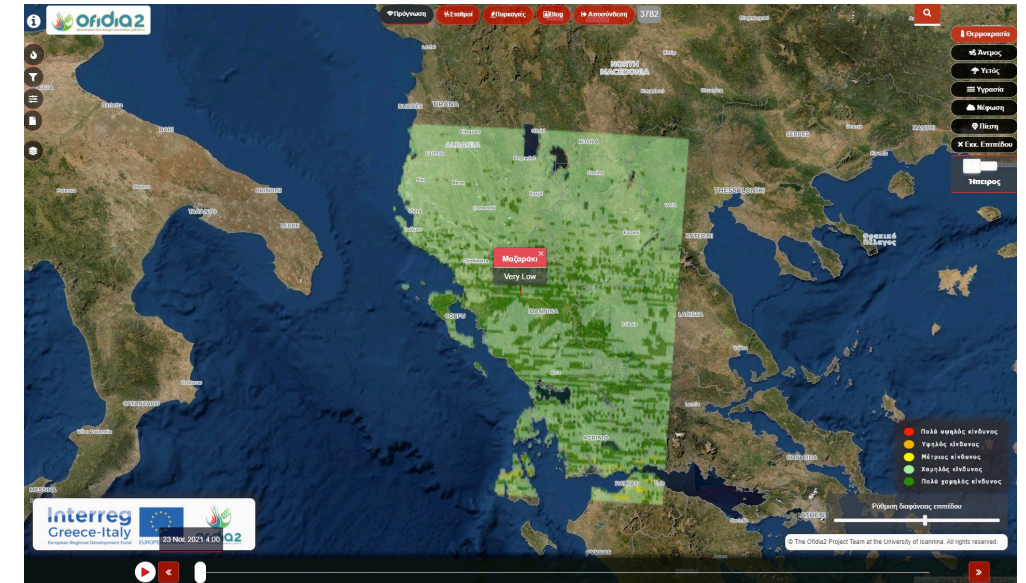
Fire Danger Indices

- FFWI (Canadian), FWI (Fosberg), IFI (Ichnusa) fire danger indices for the next 72h computed each day through an operational chain run at the CMCC Supercomputing Center
- 6 risk levels for FFWI and FWI (Extreme, Very High, High, Moderate, Low, Very Low)
- 5 risk levels for IFI (Extreme, High, Moderate, Low, Very Low)
- Weather variables visualization (temperature, solar radiation, relative humidity, wind speed and direction, total precipitation)
- Visualization of the single ignition point or the aggregate value for the last week or month.

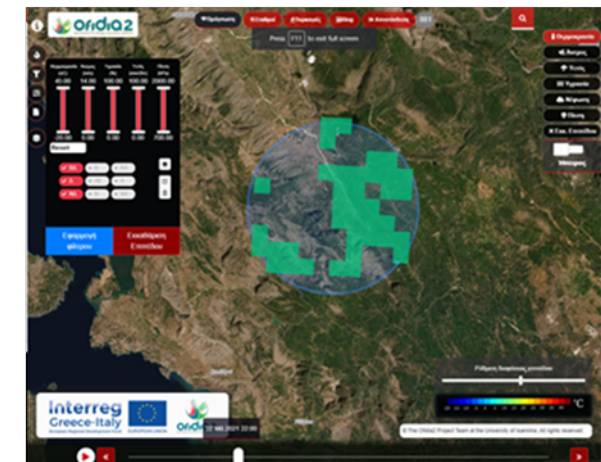


Fire Danger Indices

- FFWI (Canadian), FWI (Fosberg), IFI (Ichnusa) fire danger indices for the next 72h computed each day through an operational chain run at CMCC or U.Ioannina
- 6 risk levels for FFWI and FWI (Extreme, Very High, High, Moderate, Low, Very Low)
- 5 risk levels for IFI (Extreme, High, Moderate, Low, Very Low)
- Weather variables visualization (temperature, solar radiation, relative humidity, wind speed and direction, total precipitation)
- Visualization of the single ignition point or the aggregate value for the last week or month.



Filter with Weather Criteria on circled region



Fire Behaviour

Flammap and WildFire Analyst simulators

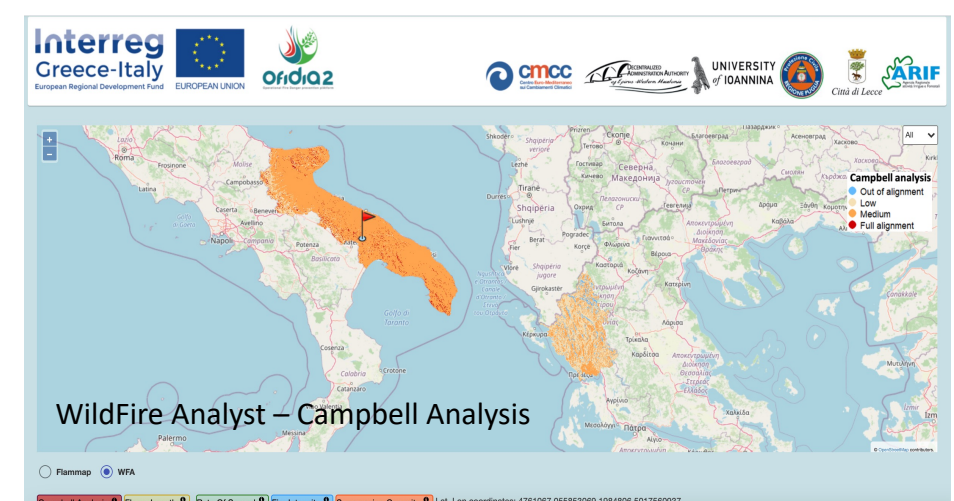
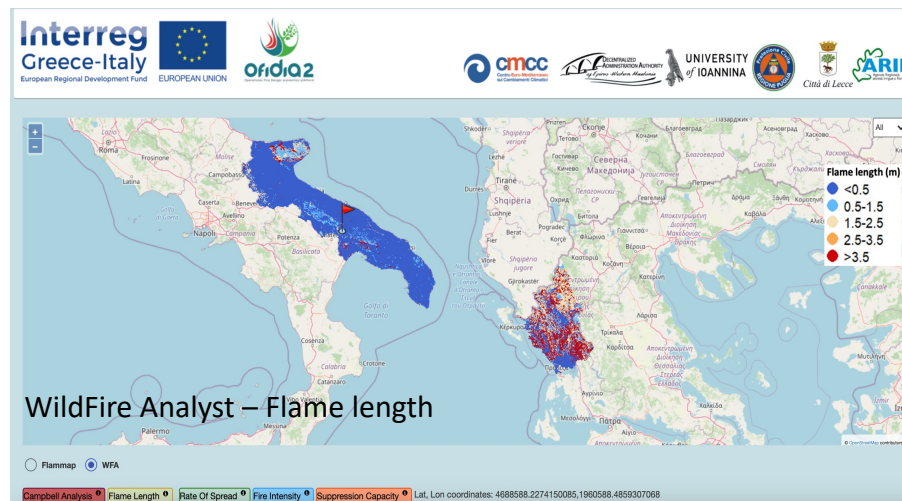
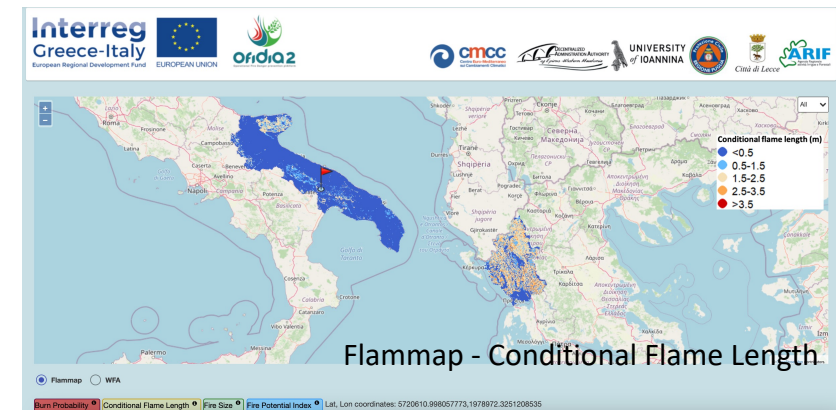
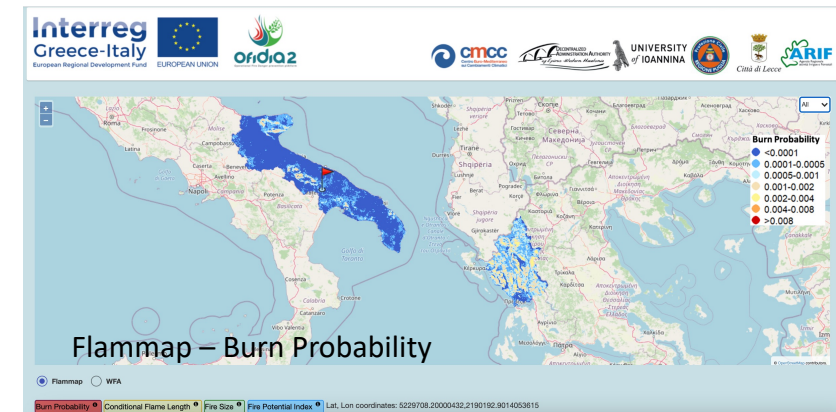
- Flammap only for the Apulia region
 - Burn probability (BP), conditional flame length (CFL), fire potential index (FPI), fire size (FS) maps



WildFire Analyst for the Apulia and Epirus regions

- Campbell analysis, Fire Intensity (FI), Flame length (FL), Rate of Spread (ROS), Suppression Capacity (SupCap)

Maps are dynamically calculated based on wind speed (km/h), direction (°C) and relative humidity (%) variables from the WRF model

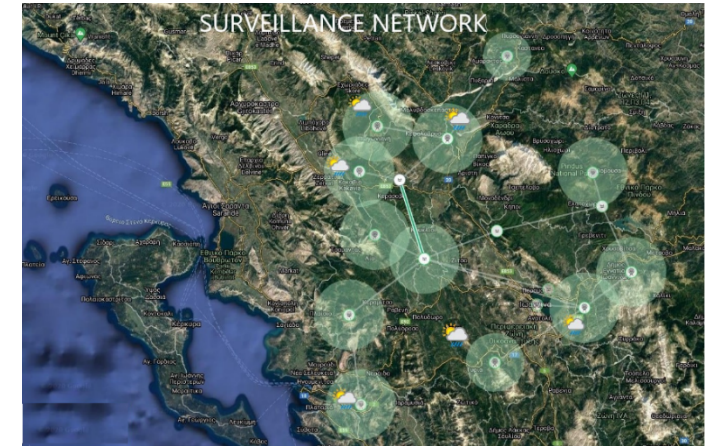


Forest Fires Monitoring & Patrolling (Epirus)

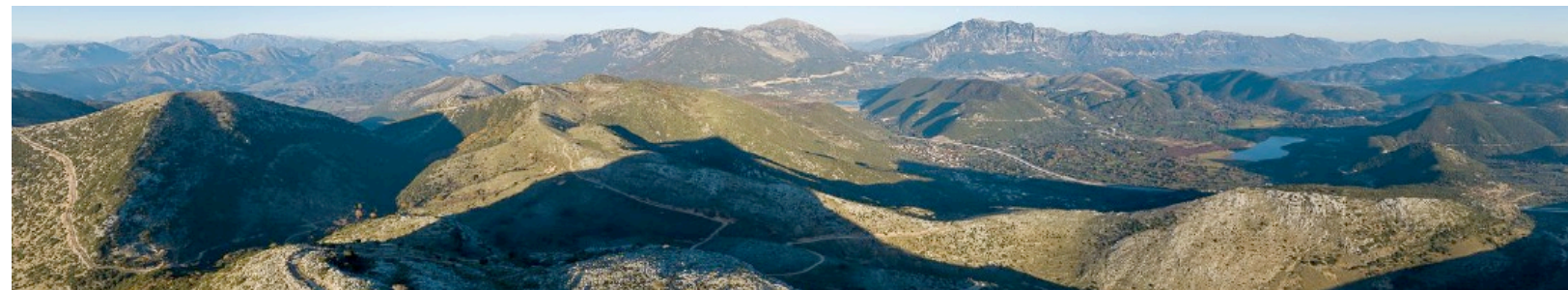
Off-road Vehicles



HD video cameras

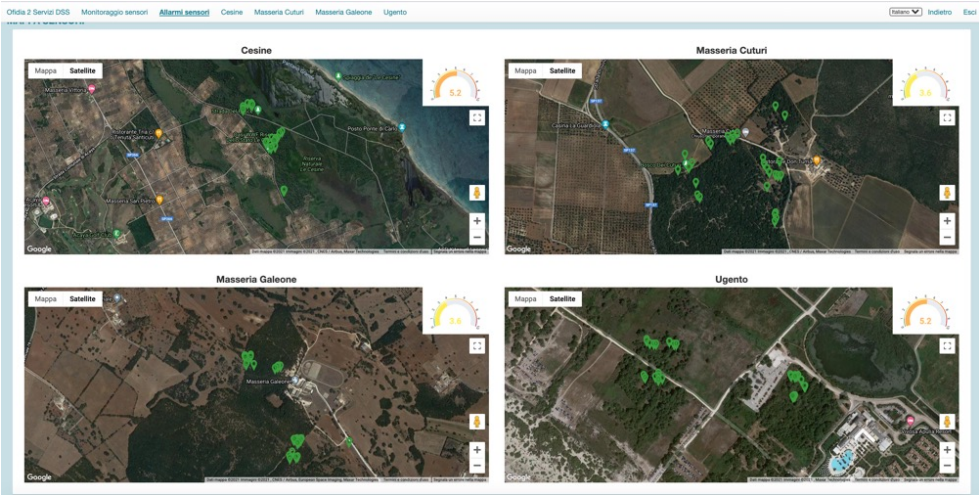


Drones

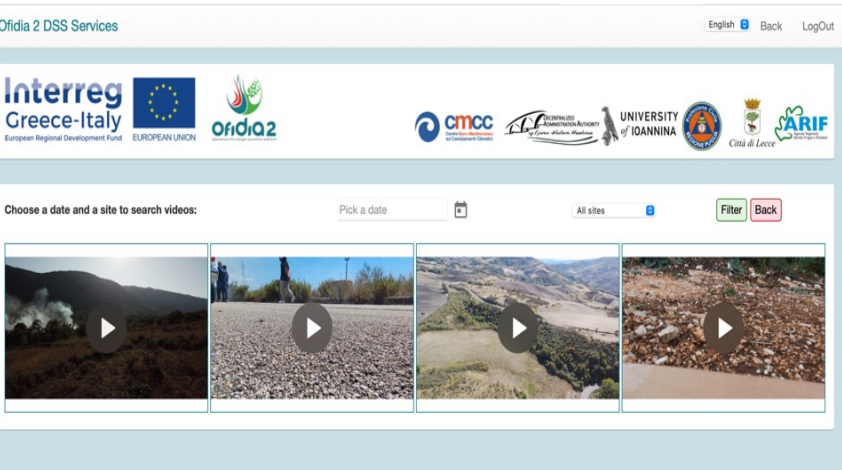


Forest Fires Monitoring & Patrolling (Puglia)

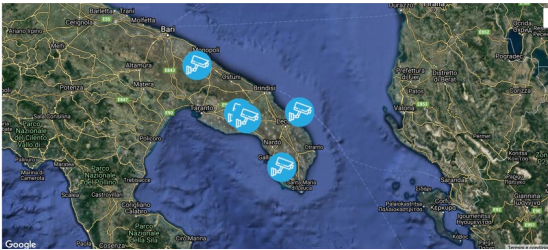
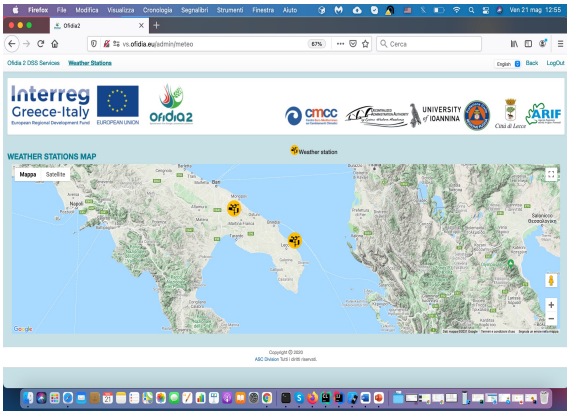
Wireless sensors networks



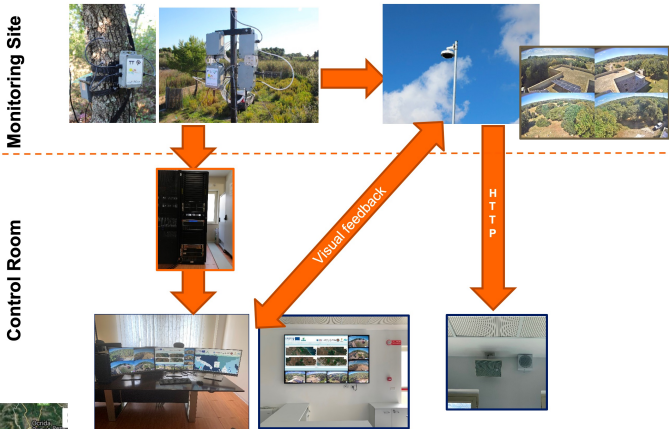
Drones



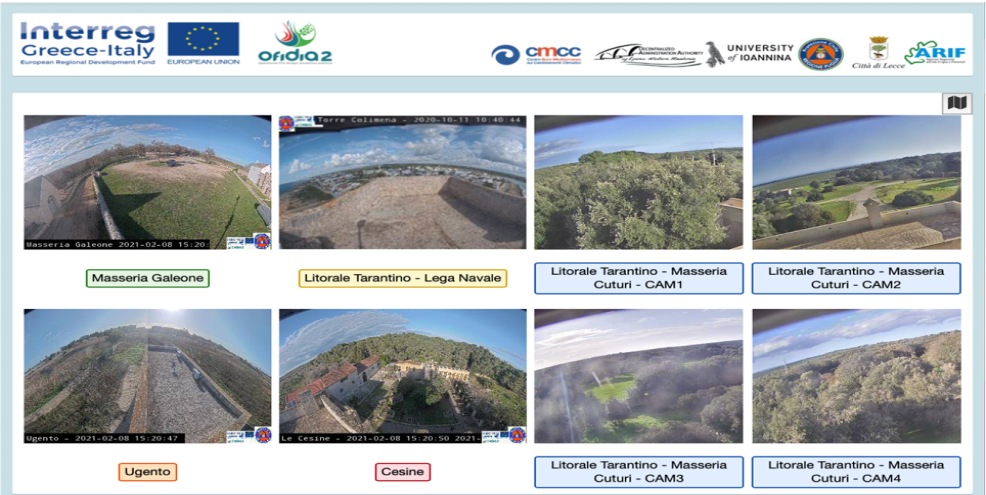
Weather stations



Environmental Monitoring



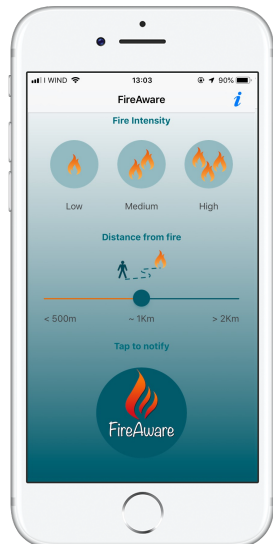
HD video cameras



Wildfire Control Room at Puglia Civil Protection for fire hazard forecasting and monitoring



Education and **Lifelong Learning** through awareness-raising campaigns on fire danger prevention and biodiversity protection



FireAware crowdsensing mobile **App** to send an alert notification to the Civil Protection in case of a potential fire hazard, including images and the distance from fire



Social Awareness of fire danger risk



A wide-angle photograph of the Golden Gate Bridge in San Francisco, California. The bridge's iconic orange-red towers and suspension cables are prominent, stretching across the frame from the foreground to the distance. The bridge spans the Golden Gate Strait, with the city of San Francisco visible on the left and Marin County on the right. The water is a deep blue, and the sky is a clear, pale blue. The lighting suggests it might be late afternoon or early morning, with a soft glow on the bridge's structure.

Now that this project has successfully come to an end, we would be happy to share our results and achievements to start new and fruitful collaborations beyond borders

THANK YOU